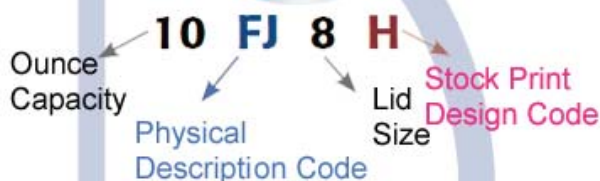


## Dart Cup and Lid Chart

### Stock Number Legend:

Numbers denote size.  
Letters denote a specific style.



### Physical Description

- J J Cup Style
- T Tall
- A Auto
- F Flush Fill
- B Bowl
- M Medium Profile
- S Squat Profile
- KY Greek Key Design
- X X Cup Style

### Stock Print Design Codes

- E Impulse
- H Horizon
- G Cafe G
- TWN Uptown
- RPM RPM
- C Coke

### DART FOAM CUPS

- Versatile, practical, and convenience of insulated foam beverage cups
- Hot or cold drinks are insulated well



SWP ITEM #	MFG ITEM #	DESCRIPTION
645.1034	4J4	4 OZ. - 1000/CTN
645.1037	6J6	6 OZ. - 1000/CTN
645.1049	8J8	8 OZ. - 1000/CTN
645.1061	10J10	10 OZ. - 1000/CTN
645.1073	12J12	12 OZ. - 1000/CTN
645.4045	14J12	14 OZ. - 1000/CTN
645.1085	16J16	16 OZ. - 1000/CTN
645.1097	20J16	20 OZ. - 500/CTN
645.1104	24J16	24 OZ. - 500/CTN
645.4085	32TJ32	32 OZ. - 500/CTN

### DART HORIZON FOAM CUPS

- Horizon design adds a touch of color to any beverage service, while providing an economical alternative to custom print
- Suited for hot or cold beverages
- 8 oz. cup



SWP ITEM #	MFG ITEM #	DESCRIPTION
645.2012	8J8H	1000/CTN

### DART GOURMET FOAM CUPS

- This premium line of insulated Thermo-Glaze cups keep beverages at their proper serving temperature



SWP ITEM #	MFG ITEM #	DESCRIPTION
645.2037	8X8G	8 OZ. - 1000/CTN
645.2049	12X16G	12 OZ. - 1000/CTN

# FOOD SERVICE DISPOSABLES - CUPS

## DART WHITE FOAM CUPS

- Cup fits well in car cup holders
- Suited for hot or cold beverages
- 32 oz. cup



SWP ITEM #	MFG ITEM #	DESCRIPTION
645.2026	32AJ20E	400/CTN

## The Wegbreit Group, LLC. WRAPPED PLASTIC CUPS

- 10 oz.
- Wrapped cups offer the best means of sanitation
- Translucent



SWP ITEM #	MFG ITEM #	DESCRIPTION
640.2212	617-005	10 OZ. - 1000/CTN

## SOLO CLEAR PLASTIC CUPS

- Cups offer clarity
- Easily recyclable
- Flexible and crack resistant



SWP ITEM #	MFG ITEM #	DESCRIPTION
642.1012	TP12-0090	12-14 OZ. - 1000/CTN
642.1045	TP16-0090	16 OZ. - 1000/CTN

## SOLO CLEAR PLASTIC SQUAT CUPS

- Cups offer clarity and crack resistance
- Easily recyclable
- Flexible and crack resistant



SWP ITEM #	MFG ITEM #	DESCRIPTION
642.1023	TP9-0090	9 OZ. - 1000/CTN

## SOLO TRANSLUCENT PLASTIC CUPS

- Economical
- The cups provide safety and convenience
- Sidewall ridges adds strength for the cup



SWP ITEM #	MFG ITEM #	DESCRIPTION
642.1061	Y5JJ	5 OZ. - 2000/CTN
642.1085	Y9LT	9 OZ. - 1500/CTN
642.1121	Y14JJ	14 OZ. - 1000/CTN

## SOLO TRANSLUCENT PLASTIC CUPS

- 5 oz. cup convenient for medical facilities



SWP ITEM #	MFG ITEM #	DESCRIPTION
642.1016	P35A	3.5 OZ. - 2500/CTN
642.1019	M5	5 OZ. - 1000/CTN

## SOLO GRADUATED PLASTIC MEDICINE CUPS

- Graduated cups show 1/4, 1/2, 3/4, and 1 oz. measurements



SWP ITEM #	MFG ITEM #	DESCRIPTION
646.1013	T101-0090	1 OZ. - 5000/CTN

## DIXIE PERFECT TOUCH DESIGN PAPER CUPS

- Cups insulate better than costly double-cupping
- Cup design provides comfortable grip
- Contains no polystyrene foam
- Features a "Coffee Dreams" design



SWP ITEM #	MFG ITEM #	DESCRIPTION
655.3046	5338CD	8 OZ. - 1000/CTN
655.3015	5342CD	12 OZ. - 1000/CTN
655.3018	5356CD	16 OZ. - 1000/CTN

# CUPS - FOOD SERVICE DISPOSABLES

## DIXIE WHITE PLASTIC PERFECT TOUCH DOME LIDS

- Dome fits Perfect Touch 10-16 oz. and 12-20 oz Paper Hot Cups
- Helps to prevent spills from sloshing



SWP ITEM #	MFG ITEM #	DESCRIPTION
655.3017	D9542	1000/CTN

## SOLO TROPHY MISTIQUE DESIGN FOAM CUPS

- Cups are designed for coffee, hot tea or cocoa



SWP ITEM #	MFG ITEM #	DESCRIPTION
640.2047	X12 0029	12 OZ. - 1000/CTN

## SOLO SYMPHONY DESIGN COLD DRINK CUPS

- Treated paper cups offer superior rigidity as well as flexibility
- Made with at least 50% renewable resources



SWP ITEM #	MFG ITEM #	DESCRIPTION
655.4001	R53 J8000	5 OZ. - 3000/CTN
655.3036	R7N J8000	7 OZ. - 2000/CTN
655.3038	R12N J8000	12 OZ. - 2000/CTN
655.3039	RW16 J8000	16 OZ. - 1000/CTN

## SOLO JAZZ DESIGN POLY COATED PAPER CUPS

- Cups are designed for coffee, hot tea or cocoa



SWP ITEM #	MFG ITEM #	DESCRIPTION
640.2041	VS512 00055	12 OZ. - 1200/CTN

## SOLO SYMPHONY DESIGN PAPER CUPS WITH HANDLES

- Design includes handle



SWP ITEM #	MFG ITEM #	DESCRIPTION
655.3054	376HSM-J8000	6 OZ. - 1000/CTN
655.3052	378HSM-J8000	8 OZ. - 1000/CTN

## SOLO BLACK PLASTIC TRAVELER LID

- One lid for five cups: Bistro, Jazz, Symphony, Mistique, and White
- Fits 10 oz. squat, 12 oz., 16 oz., 20 oz., and 24 oz.



SWP ITEM #	MFG ITEM #	DESCRIPTION
640.2056	TLB316-0004	1000/CTN

## SOLO BISTRO DESIGN PAPER CUPS

- Cups are designed for coffee, hot tea or cocoa



SWP ITEM #	MFG ITEM #	DESCRIPTION
640.2050	316SI-0041	16 OZ. - 1000/CTN
640.2053	420SI-0041	20 OZ. - 600/CTN

## SOLO BARE PAPER HOT CUPS

- Made with at least 10% post-consumer recycled fiber and at least 90% renewable resources
- Made using recycled white office paper
- Reduces use of virgin material
- First-ever FDA-compliant PCF paper hot cup



SWP ITEM #	MFG ITEM #	DESCRIPTION
640.2001	378RC-J8484	8 OZ. - 1000/CTN
640.2003	316RC-J8484	16 OZ. - 1000/CTN
640.2004	420RC-J8484	20 OZ. - 1000/CTN

# FOOD SERVICE DISPOSABLES - COLD CUPS & LIDS

## SOLO SOLO ROLLED RIM WATER CONE CUP

- Helps to keep areas sanitary around the water cooler
- Made with at least 80-90% renewable resources



SWP ITEM #	MFG ITEM #	DESCRIPTION
655.3057	4BR-2050	4 OZ. - 5000/CTN
655.3059	42BR-2050	4.25 OZ. - 5000/CTN

## DART DART SQUAT FOAM CONTAINERS

- Insulated foam helps keep food at its proper serving temperature
- Foam food containers can be prepackaged or used for immediate serving



SWP ITEM #	MFG ITEM #	DESCRIPTION
645.4008	3.5J6	3.5 OZ. - 1000/CTN
645.4001	4J6	4 OZ. - 1000/CTN
645.4020	8SJ32	8 OZ. - 500/CTN
645.4025	8SJ20	8 OZ. - 1000/CTN
671.1070	16MJ20	16 OZ. - 500/CTN

## SOLO SOLO PAPER SOUFFLE CUP

- Economical portion cups



SWP ITEM #	MFG ITEM #	DESCRIPTION
655.3067	075-2050	0.75 OZ. - 5000/CTN
655.3069	100-2050	1 OZ. - 5000/CTN
655.3070	200-2050	2 OZ. - 5000/CTN

## DART DART PLASTIC CUP LIDS

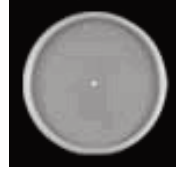
- White Vented Lid
- 1000/ctn



SWP ITEM #	MFG ITEM #	DESCRIPTION
655.1305	12JL	WHITE, VENTED
FITS CUPS: 10J12, 12J12, 14J12, 14FJ12, 12X12, 6SJ12, 8SJ12, AND 6B12		

## DART DART TRANSLUCENT CUP LIDS

- White Translucent Lid
- 20JL: 1000/ctn
- 32JL: 500/ctn



SWP ITEM #	MFG ITEM #	DESCRIPTION
655.1325	20JL	TRANSLUCENT, VENTED
FITS CUPS: 32AJ20, 8SJ20, 12SJ20, 16MJ20, 5B20, 6B20, 8B20, AND 10B20		

SWP ITEM #	MFG ITEM #	DESCRIPTION
655.1337	32JL	TRANSLUCENT, VENTED
FITS CUPS: 32TJ32, 44AJ32, 44TJ32, 32X32, 8SJ32, 16MJ32, AND 12B32		

## DART DART LIFT N' LOCK CUP LIDS

- Insulating foam to SipThru
- Lift and lock
- 1000/ctn



SWP ITEM #	MFG ITEM #	DESCRIPTION
655.1350	8FTL	1000/CTN
FITS CUPS: 6J8, 8J8, 8KY8, 10FJ8, 8X8, 89U8, AND 89U8ESC		

## DART DART TRANSLUCENT LIFT N' LOCK WITH STRAW SLOT CUP LIDS

- Translucent with straw slot, insulating foam to SipThru
- Lift and lock
- 1000/ctn



SWP ITEM #	MFG ITEM #	DESCRIPTION
655.1310	16FTLS	1000/CTN
FITS CUPS: 12J16, 14J16, 16J16, 20J16, 24J16, 12X16, 14X16, 16X16, 20X16, 24X16, 12U16, 16U16, 20U16, AND 24U16		

# COLD CUPS, LIDS, AND STRAWS - FOOD SERVICE DISPOSABLES



## DART TRANSLUCENT STRAW SLOTTED LIDS

- Translucent straw slotted
- Dart lids are the perfect answer for topping off each sale



SWP ITEM #	MFG ITEM #	DESCRIPTION
655.1253	8SL	6-10 OZ. - 1000/CTN
FITS CUPS: 8J8, 9J8, 89U8, AND 89U8ESC		

SWP ITEM #	MFG ITEM #	DESCRIPTION
655.1313	16SL	12 - 20 OZ. - 1000/CTN
FITS CUPS: 12J16, 14J16, 16J16, 20J16, 24J16, 12U16, 16U16, 20U16, AND 24U16		

SWP ITEM #	MFG ITEM #	DESCRIPTION
655.1320	20SL	32 OZ. - 1000/CTN
FITS CUPS: 32AJ20		

SWP ITEM #	MFG ITEM #	DESCRIPTION
655.1342	32SL	32 - 44 OZ. - 500/CTN
FITS CUPS: 32TJ32, 44AJ32, 44TJ32, AND 32X32		



## DART FUSION DESIGN FOAM CUPS

- Fusion hot cup offers great insulation for cold and hot beverages
- Fusion hot cup features a ThermoThin core that provides insulation while keeping the cup's sidewalls cool



SWP ITEM #	MFG ITEM #	DESCRIPTION
645.1101	12U16ESC	12OZ - 1000/CTN
645.1102	16U16ESC	16OZ - 1000/CTN
645.1103	20U16ESC	20OZ - 500/CTN



## DART BLACK CAPPUCCINO CUP LIDS

- High domed, insulating foam to SipThru
- 1000/ctn



SWP ITEM #	MFG ITEM #	DESCRIPTION
655.1312	16ELBLK	1000/CTN
FITS CUPS: 112J16, 14J16, 16J16, 20J16, 24J16, 12X16, 14X16, 16X16, 20X16, 24X16, 12U16, 16U16, 20U16, AND 24U16		



## DIXIE SLIM RED STRAWS / STIRRERS

- Red straw comes unwrapped
- 7.75 in. long



SWP ITEM #	MFG ITEM #	DESCRIPTION
656.1067	SB7R	5000/CTN

## SOLO WHITE WRAPPED JUMBO FLEX STRAWS

- White straw comes individually wrapped
- 7.625 in. long



SWP ITEM #	MFG ITEM #	DESCRIPTION
656.1063	875WX 2050	25BOX/CTN 400/BOX

## SOLO WHITE WRAPPED STRIPED STRAWS

- White striped straw comes individually wrapped
- 7.75 in. long



SWP ITEM #	MFG ITEM #	DESCRIPTION
656.1070	822WRX-2050	12000/CTN

## SOLO CLEAR UNWRAPPED JUMBO STRAWS

- Clear straw comes unwrapped in carton
- 7.75 in. long



SWP ITEM #	MFG ITEM #	DESCRIPTION
656.1075	722TX 0075	12000/CTN



# FOOD SERVICE DISPOSABLES - CONTAINERS

## SOLO SOLO WHITE UNCOATED PAPER CONTAINERS

- Container can be used for either hot or cold foods



SWP ITEM #	MFG ITEM #	DESCRIPTION
645.1026	U508N 02050	8 OZ. - 1000/CTN

## SOLO SOLO WHITE POLY COATED PAPER CONTAINERS

- Perfect for just about any occasion and can be used for either hot or cold foods



SWP ITEM #	MFG ITEM #	DESCRIPTION
645.2040	VS508-2050	8 OZ. - 1000/CTN
645.2042	VS616-2050	16 OZ. - 500/CTN

## SOLO SOLO WHITE PLASTIC DELI CONTAINERS

- Allows prepackaged foods to be refrigerated and microwave-heated in the same container



SWP ITEM #	MFG ITEM #	DESCRIPTION
659.3001	8NWX-0007	8 OZ. - 500/CTN
659.3003	16NWX-0007	16 OZ. - 500/CTN

## SOLO SOLO TRANSLUCENT PLASTIC DELI CONTAINERS

- Allows prepackaged foods to be refrigerated and microwave-heated in the same container



SWP ITEM #	MFG ITEM #	DESCRIPTION
659.3002	MN8X-0100	8 OZ. - 500/CTN
659.3013	MN12X-0100	12 OZ. - 500/CTN
659.3014	MN16X-0100	16 OZ. - 500/CTN
659.3016	MN32X-0100	32 OZ. - 500/CTN

## SOLO SOLO TRANSLUCENT PLASTIC DELI CONTAINER LIDS

- Allows prepackaged foods to be refrigerated and microwave-heated in the same container
- Fits Solo NWX and MN containers



SWP ITEM #	MFG ITEM #	DESCRIPTION
659.3005	NL8X-0100	500/CTN

## SOLO SOLO WHITE UNCOATED PAPER TUBS

- Great option for dry snack items



SWP ITEM #	MFG ITEM #	DESCRIPTION
647.6026	5TI N0195	83 OZ. - 100/CTN
647.6050	10TI N0198	165 OZ. - 100/CTN

# PLATES & PLATTERS - FOOD SERVICE DISPOSABLES



## HUGHTAMAKI WHITE CHINET PAPER PLATES

- 6 in. white paper plate - *Vacate* plate



SWP ITEM #	MFG ITEM #	DESCRIPTION
670.3003	21225	1000/CTN

- 10.25 in. white paper plate 3 compartment - *Vestry* plate



670.3013	21204	500/CTN
----------	-------	---------

- 10.25 in. white paper plate - *Venture* plate



670.3025	21217	500/CTN
----------	-------	---------



## DART LAMINATED FOAM PLATES

- Quality foam dinnerware for any food service application
- Dinnerware is lighter than conventional china, yet strong enough to hold a full portion of food without bending



SWP ITEM #	MFG ITEM #	DESCRIPTION
670.5121	9PWQ	LAMINATED - 500/CTN



## DART INSULATED FOAM BOWLS

- Insulated foam bowls keep hot servings hot and cold servings cold
- Designed with a rounded spoonable bottom



SWP ITEM #	MFG ITEM #	DESCRIPTION
670.3049	8B20	8OZ - 1000/CTN
670.3061	12B32	12OZ - 1000/CTN



## SOLO CHAMPAGNE FOAM LAMINATED TABLEWARE

- 6 in. plate



SWP ITEM #	MFG ITEM #	DESCRIPTION
655.7002	RS6BPY/0019	1000/CTN - 6 IN.

- 9 in. and 10 in. plates



655.7003	RS9DPY/0019	500/CTN - 9 IN.
655.7005	RS105Y/0019	500/CTN - 10 IN.

- 10 in. - 3 compartment plates



655.7006	RS10CY/0019	500/CTN - 10 IN.
----------	-------------	------------------

- Platter



655.7007	RS79PY/0019	500/CTN - 7 IN. X 9 IN.
----------	-------------	-------------------------

- 5 oz. and 12 oz. bowls



655.7008	RS5DBY/0019	1000/CTN - 5 OZ.
655.7009	RS12BN/0019	1000/CTN - 12 OZ.



## DART CONCORDE NON-LAMINATED FOAM PLATES

- Quality foam dinnerware for any food service application
- Dinnerware is lighter than conventional china, yet strong enough to hold a full portion of food without bending



SWP ITEM #	MFG ITEM #	DESCRIPTION
670.5061	6PWC	6" - 1000/CTN
670.5073	9PWC	9" - 500/CTN
670.5079	10PWC	10-1/4" - 500/CTN
670.5097	10CPWC	10-1/4" - 3 COMP - 500/CTN



## DART NON-LAMINATED CONCORDE FOAM BOWLS

- Foam dinnerware any food service application
- Dinnerware is lighter than conventional china, yet strong enough to hold a full portion of food without bending



SWP ITEM #	MFG ITEM #	DESCRIPTION
670.5109	12BWWC	12OZ - 1000/CTN



## DIXIE RED PLAID POLY COATED PAPER TRAY

- Poly coated
- Red plaid



SWP ITEM #	MFG ITEM #	DESCRIPTION
677.6001	RP50	1000/CTN - 1/2 LB
677.6013	RP1008	1000/CTN - 1 LB
677.6025	RP2008	1000/CTN - 2 LB
677.6037	RP3008	500/CTN - 3 LB
677.6049	RP500	500/CTN - 5 LB



## SOLO POLYSTYRENE CUTLERY COMBO

- Fork, knife, spoon, napkin, salt, and pepper
- The smart choice for casual dining meals
- Strong, shatter resistant and durable
- Convenient and sanitary



SWP ITEM #	MFG ITEM #	DESCRIPTION
802.1080	CM26NSPC7	250/CTN



## SOLO POLYSTYRENE CUTLERY SPOON

- Great for catering and everyday use
- Almond color
- Heavy weight



SWP ITEM #	MFG ITEM #	DESCRIPTION
802.2040	10018-0222	1000/CTN



## SOLO POLYSTYRENE CUTLERY FORK

- Great for catering and everyday use
- Almond color
- Heavy weight



SWP ITEM #	MFG ITEM #	DESCRIPTION
802.2045	10016-0001	1000/CT



## SOLO POLYSTYRENE CUTLERY KNIFE

- Great for catering and everyday use
- Almond color
- Heavy weight



SWP ITEM #	MFG ITEM #	DESCRIPTION
802.2050	10017-0222	1000/CTN



**SOLO** SOLO  
**WHITE PLASTIC  
POLYPROPYLENE SPOON**

- Great for everyday use
- White color
- Medium weight



SWP ITEM #	MFG ITEM #	DESCRIPTION
802.7027	MOWT 0007	1000/CTN

**SOLO** SOLO  
**WHITE PLASTIC  
POLYPROPYLENE FORK**

- Great for everyday use
- White color
- Medium weight



SWP ITEM #	MFG ITEM #	DESCRIPTION
802.7026	MOWF 0007	1000/CTN

**SOLO** SOLO  
**WHITE PLASTIC  
POLYPROPYLENE KNIFE**

- Great for everyday use
- White color
- Medium weight



SWP ITEM #	MFG ITEM #	DESCRIPTION
802.7028	MOWK 0007	1000/CTN

**DART** DART  
**FOAM HINGED  
LID CONTAINER**

- Foam containers retain the high insulating features
- Can be used for both hot or cold foods



SWP ITEM #	MFG ITEM #	DESCRIPTION
670.5013	60HT1	5-7/8X6X3 - 1 COMP

**PACTIV** PACTIV  
**3 COMPARTMENT FOAM  
HINGED CONTAINER**

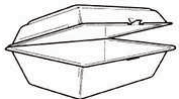
- Durable for multi-food applications
- Meets the challenge of heavier foods
- Insulated to keep hot foods hot and cold foods cold
- Easy to close and reopen



SWP ITEM #	MFG ITEM #	DESCRIPTION
672.1065	YTD1-8803	8 IN X 8 IN X 3IN - 150/CTN
672.1067	YTD1-9903	9 IN X 8 IN X 3 IN - 150/CTN

**PACTIV** PACTIV  
**1 COMPARTMENT FOAM  
HINGED CONTAINER**

- Meets the challenge of heavier foods
- Insulated to keep hot foods hot and cold foods cold
- Easy to close and reopen



SWP ITEM #	MFG ITEM #	DESCRIPTION
672.1066	YTD1-9901	9 IN X 9 IN X 3 IN - 150/CTN

**DART** DART  
**1 COMPARTMENT PLASTIC  
HINGED CONTAINER**

- Seven-lock closure means a secure seal while the elevated platform design allows stacking of multiple containers



SWP ITEM #	MFG ITEM #	DESCRIPTION
670.5128	C57HT1	6 X 5-7/8 X 3-1/4 - 500/CTN
670.5145	C95HT1	9-1/2 X 9-1/8 - 200/CTN

# FOOD SERVICE DISPOSABLES - BAGS, FILM, AND FOIL

**PITT PLASTICS**  
**CLEAR POLY PRINTED**  
**ICE BAGS**

- Labeled ice bag
- Holds approximately 10 lbs.



SWP ITEM #	MFG ITEM #	DESCRIPTION
604.1013	IB-10	12 X 21 - 1.6 MIL - 1000/CTN

**PITT PLASTICS**  
**CLEAR POLY SANDWICH BAG**  
**WITH 2 IN. LIP FOLD**

- Sandwich bag with 2 in. lip fold to enclose food items



SWP ITEM #	MFG ITEM #	DESCRIPTION
610.2125	SW-12	6.25 X 6 + 2 IN. LIP - 2000/CTN



**ELKAY**  
**POLY**  
**FREEZER FILM**

- 1 mil thickness



SWP ITEM #	MFG ITEM #	DESCRIPTION
531.4038	15"X4500'	1 RL - 15 IN X 4500 FT
531.4050	18"X4500'	1 RL - 18 IN X 4500 FT

**RED ROCK**  
**POLY**  
**RED ROCK MEAT FILM**

- 544.4061 (RRSH-151) - safehandling print
- 544.4073 (RRSH-181) - safehandling print



SWP ITEM #	MFG ITEM #	DESCRIPTION
544.4014	77907-15	1 RL-15 IN X 5000 FT 60 GAGE
544.4026	77907-18	1 RL-18 IN X 5000 FT- 60 GAGE
544.4061	RRSH-151	1 RL-15 IN X 5000 FT- 62 GAGE
544.4073	RRSH-181	1 RL-18 IN X 5000 FT- 62 GAGE



**SHIELD**  
**POLY FRESH**  
**MEAT FILM PERFORATED**

- A stretch film used with automatic or manual wrapping for packaging fresh meat
- This film with its high gloss and easy stretch provides attractive packages for maximum appeal
- 65 Gage



SWP ITEM #	MFG ITEM #	DESCRIPTION
543.6037	MC-7	12 IN X 12 IN - 1100SHEETS/RL
543.6061	MC-7	18 IN X 18 IN - 700SHEETS/RL



**SHIELD**  
**POLY FRESH MEAT FILM**  
**SHRINK PVC PERFORATED**

- A stretch film used with automatic or manual wrapping for packaging fresh meat
- This film with its high gloss and easy stretch provides attractive packages for maximum appeal
- 100 Gage



SWP ITEM #	MFG ITEM #	DESCRIPTION
546.6049	HS-10	15 IN X 15 IN - 500SHEETS/RL
546.6061	HS-10	18 IN X 18 IN - 400SHEETS/RL
546.6073	HS-10	22 IN X 22 IN - 400SHEETS/RL

**PACTIV**  
**FOIL WRAP**

- Ideal for storage and wrapping
- For reconstitution and all purpose cooking
- Good for freezing and heavy duty lining



SWP ITEM #	MFG ITEM #	DESCRIPTION
532.4041	W18	1 RL - 18 IN X 500 FT - STD WT
532.4049	W28	1 RL - 18 IN X 500 FT - HD WT

**PACTIV**  
**FOIL WRAP -**  
**POP UP SHEETS**

- Ideal for storage and wrapping
- For reconstitution and all purpose cooking
- Good for freezing and heavy duty lining
- 12 in X 10.75 in



SWP ITEM #	MFG ITEM #	DESCRIPTION
672.1021	W70	12BOX/CTN 200SHEETS/BOX

# FOIL, PAPER, BOXES, AND FILM - FOOD SERVICE DISPOSABLES



## PACTIV FOIL WRAP - POP UP SHEETS

- Ideal for storage and wrapping
- For reconstitution and all purpose cooking
- Good for freezing and heavy duty lining
- 9 in X 10.75 in



SWP ITEM #	MFG ITEM #	DESCRIPTION
531.3030	W72	6BOX/CTN 500SHEETS/BOX



## DIXIE LIFT OFF QUILON PAN LINER

- 16.375 in. x 24.375 in.



SWP ITEM #	MFG ITEM #	DESCRIPTION
534.5098	LO10	4CTN/LAYER 1000/CTN



## SHAMROCK PAPER SUN BRIGHT BUTCHER PAPER

- 40 lb



SWP ITEM #	MFG ITEM #	DESCRIPTION
507.1002	151300	1 ROLL EA - 15 IN X 1300 FT
507.1012	181300	1 ROLL EA - 18 IN X 1300 FT
507.1022	241300	1 ROLL EA - 24 IN X 1300 FT
507.1028	361300	1 ROLL EA - 36 IN X 1300 FT
507.1030	481300	1 ROLL EA - 48 IN X 1300 FT



## DIXIE CLEAR POLY WRAP SATIN PAC

- High-density film wrap ideal for freezer use
- Prevents moisture barrier between food items
- High-density polyethylene interfolded all purpose deli sheets



SWP ITEM #	MFG ITEM #	DESCRIPTION
533.5050	S-6	10000/CTN - 6 IN X 10.75 IN
533.5052	S-8	10000/CTN - 8 IN X 10.75 IN
533.5056	S-12	10000/CTN - 12 IN X 10.75 IN
533.5058	S-15	10000/CTN - 15 IN X 10.75 IN



## AMERICAN PACKAGING MEAT TOTE TRAYS

- 25.25 in. x 14.25 in. x 5 in.
- 44 ECT



SWP ITEM #	MFG ITEM #	DESCRIPTION
682.1001	MT-TOTE	250/BUNDLE



## DIXIE KABNET WAX PAPER

- 12 BOX/CTN - 500SHEETS/BOX



SWP ITEM #	MFG ITEM #	DESCRIPTION
532.5001	81JUNIOR	500/BOX - 8 IN X 10.75 IN
532.5013	83MASTER	500/CTN - 12 IN X 10.75 IN



## DIXIE FREEZER PAPER

- "Super" keeps food fresh up to 1 year
- "Kold" and "Fresh" keeps food fresh up to 6 months



SWP ITEM #	MFG ITEM #	DESCRIPTION
528.4160	SUPLOX15	1 RL - 15 IN X 1000FT SUPER
528.4170	SUPLOX18	1 RL - 18 IN X 1000FT SUPER
528.4182	KL18	1 RL - 18 IN X 1100FT KOLD
528.4190	FG15	1 RL - 15 IN X 1100FT FRESH
528.4195	FG18	1 RL - 18 IN X 1100FT FRESH
528.4198	FG24	1 RL - 24 IN X 1100FT FRESH



## DIXIE KABNET WAX PAPER

- 10 BOX/CTN - 1000 SHEETS/BOX



SWP ITEM #	MFG ITEM #	DESCRIPTION
533.5010	T-6	1000/BOX - 6 IN X 10.75 IN

# FOOD SERVICE DISPOSABLES - PAPER, BAGS, COVERS, AND APRON



## DIXIE PEACH STEAK PAPER

- High quality wet strength paper used for tempting display and merchandising, for interleaving of fresh meat and seafood in meat display cases



SWP ITEM #	MFG ITEM #	DESCRIPTION
513.2025	16406011	10" X 14" - 1000/CTN



## DIXIE PATTY PAPER

- Good for use with frozen meat patties - permits fast, easy separation of patties
- Controls shrinkage and prevents juice absorption



SWP ITEM #	MFG ITEM #	DESCRIPTION
535.5037	15009600	5-3/16 X 5-3/16-W55-14000/CTN
535.5049	15005036	5-3/16 X 5-3/16-W46-28000/CTN



## FISCHER PAPER DRY WAX SANDWICH BAG

- 6 in. x 0.75 in. x 6.5 in.
- Bulk pack




SWP ITEM #	MFG ITEM #	DESCRIPTION
604.1391	508-105	2000/CTN

## Royal TCD WHITE PLASTIC TABLECOVER

- 40 in. x 300 ft.



SWP ITEM #	MFG ITEM #	DESCRIPTION
753.1063	TCD	6BOX/CTN 1 ROLL/BOX



## HOFFMASTER TISSUE/POLY BRIGHT WHITE PAPER ROLL

- 40 in. x 300 ft.



SWP ITEM #	MFG ITEM #	DESCRIPTION
753.1002	260045	1 ROLL/CTN



## TIDI PRODUCTS WHITE PLASTIC APRON

- 28 in. x 46 in.



SWP ITEM #	MFG ITEM #	DESCRIPTION
846.1003	10419	100BOX/CTN 5/BOX

# NAPKINS - FOOD SERVICE DISPOSABLES



## GEORGIA PACIFIC TIDYNAP NAPKINS

- Economical and small
- Ideal for limited menu service operations
- 1-ply TidyNap napkins
- 9 in. x 13 in.



SWP ITEM #	MFG ITEM #	DESCRIPTION
701.1025	39201	8000/CTN



Kimberly-Clark

## KIMBERLY CLARK WHITE DINNER NAPKINS 1-PLY

- 17 in. x 17 in. 1/4 fold napkin



SWP ITEM #	MFG ITEM #	DESCRIPTION
702.1003	98171	4000/CTN



## GEORGIA PACIFIC HYNAP NAPKINS

- Economical tall fold lip and
- Napkins are a low cost dispenser napkin choice for limited-menu service
- 1-ply Hynap napkins
- 7 in. x 13.5 in.



SWP ITEM #	MFG ITEM #	DESCRIPTION
701.1020	33201	10000/CTN



## CASCADES NORTH RIVER WHITE LUNCHEON NAPKINS 1-PLY

- 11.5 in. x 12.5 in. napkin



SWP ITEM #	MFG ITEM #	DESCRIPTION
702.1012	2059	6000/CTN



## CASCADES SERVE RITE NAPKINS

- Economical and small
- Ideal for limited menu service operations
- 1-ply napkins
- 13 in. x 12 in.



SWP ITEM #	MFG ITEM #	DESCRIPTION
701.1090	2629	6012/CTN



## CASCADES NORTH RIVER WHITE COCKTAIL NAPKINS 1-PLY

- 9.5 in. x 9.5 in. napkin



SWP ITEM #	MFG ITEM #	DESCRIPTION
701.1087	2222	4000/CTN



## GEORGIA PACIFIC MINI MORNAP NAPKINS

- Economical Mini-MorNap mini, full-fold dispenser napkins are a low cost large dispenser napkins for all quick-service restaurants
- 13 in. x 12 in.



SWP ITEM #	MFG ITEM #	DESCRIPTION
703.1004	37000	6000/CTN



# FOOD SERVICE DISPOSABLES - FILM, BOXES, PADS, AND TRAYS



## ANCHOR PACKAGING ALL PURPOSE CLING FILM

- All-purpose perforated sheet rolls of cling film for overwrapping any food item



SWP ITEM #	MFG ITEM #	DESCRIPTION
547.1006	E1565	6" X 5" - 3000/RL



## ANCHOR PACKAGING ANCHOR WRAP FOODSERVICE FILM / CUTTER

- Premium-Grade foodservice film with excellent cling and puncture properties
- Blue tinted film, with outstanding clarity for food service professionals



SWP ITEM #	MFG ITEM #	DESCRIPTION
547.1007	7318512 AW122	12" X 2000'
547.1008	73178518 AW182	18" X 2000'
547.1009	7318524 AW242	24" X 2000'



## SOUTHERN CHAMPION TRAY CO MEAT PATTY BOXES

- Automatic one-piece
- Tuck top
- Coated white box
- Packed in corrugated boxes
- White, 5 lb.



SWP ITEM #	MFG ITEM #	DESCRIPTION
681.1013	18407635	10" X 5" X 5-3/8" - 200/CTN



## SEALED AIR DRI LOCK MEAT PAD - AC50

- Absorbent pads feature highly absorbent virgin fluff pulp that is completely enclosed in a sealed polyethylene pouch



SWP ITEM #	MFG ITEM #	DESCRIPTION
679.1005	18000124	4.75" X 7" - 2000/CTN



## PACTIV FOAM MEAT TRAYS

- Meat trays
- White



SWP ITEM #	MFG ITEM #	DESCRIPTION
677.2001	16209001	1S - 5.25 X 5.25 X .5 - 1000/CTN
677.1013	16200548	2 - 8.25 X 5.75 X 1 - 500/CTN
677.2085	16200688	17S - 8.5 X 4.5 X .5 - 1000/CTN
677.2097	16201222	20S - 8.5 X 6.25 X .5 - 500/CTN
677.2025	16200683	4S - 9.25 X 7.25 X .5 - 500/CTN
677.2049	16200684	8S - 10 X 8 X .5 - 500/CTN
677.2061	16200685	10S - 10.75 X 6 X .5 - 500/CTN
677.2073	16204010	12S - 11 X 9 X .6 - 250/CTN

- Meat trays
- Yellow



677.3013	16201090	Y2P - 8 X 5.75 X 1.2 - 400/CTN
677.3001	16201792	Y4P - 9.25 X 7.125 X 1.2 - 300/CTN
677.3015	16201583	Y9P - 11.75 X 9.125 X 1.16 - 150/CTN

- Meat trays
- Blue



677.4028	16201195	B10S - 10.75 X 6 X .5 - 500/CTN
----------	----------	---------------------------------